

85652

Instructions

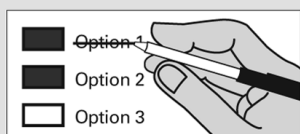
How to vote



Use a dark blue or black ink pen to completely fill in the box to the left of your choice.

Vote for one in each race. If you vote for more than one, no votes will be counted for that race.

If you make a mistake



Draw a line through the entire measure response or candidate's name. Then you may make another choice.

Optional write-in



To vote for a candidate not listed for that race, fill in the box to the left of "write-in" and print the name on the dashed line.

Who donates to campaigns?
View contributors for candidates and measures
Public Disclosure Commission
www.pdc.wa.gov
Toll Free (877) 601-2828

Start Voting Here

Initiatives to the People

Initiative Measure No. 1433

Initiative Measure No. 1433 concerns labor standards. This measure would increase the state minimum wage to \$11.00 in 2017, \$11.50 in 2018, \$12.00 in 2019, and \$13.50 in 2020, require employers to provide paid sick leave, and adopt related laws.

Should this measure be enacted into law?

Yes
 No

Initiative Measure No. 1464

Initiative Measure No. 1464 concerns campaign finance laws and lobbyists. This measure would create a campaign-finance system; allow residents to direct state funds to candidates; repeal the non-resident sales-tax exemption; restrict lobbying employment by certain former public employees; and add enforcement requirements.

Should this measure be enacted into law?

Yes
 No

Initiative Measure No. 1491

Initiative Measure No. 1491 concerns court-issued extreme risk protection orders temporarily preventing access to firearms. This measure would allow police, family, or household members to obtain court orders temporarily preventing firearms access by persons exhibiting mental illness, violent or other behavior indicating they may harm themselves or others.

Should this measure be enacted into law?

Yes
 No

Initiative Measure No. 1501

Initiative Measure No. 1501 concerns seniors and vulnerable individuals. This measure would increase the penalties for criminal identity theft and civil consumer fraud targeted at seniors or vulnerable individuals; and exempt certain information of vulnerable individuals and in-home caregivers from public disclosure.

Should this measure be enacted into law?

Yes
 No

Initiatives to the Legislature

Initiative Measure No. 732

Initiative Measure No. 732 concerns taxes. This measure would impose a carbon emission tax on certain fossil fuels and fossil-fuel-generated electricity, reduce the sales tax by one percentage point and increase a low-income exemption, and reduce certain manufacturing taxes.

Should this measure be enacted into law?

Yes
 No

Initiative Measure No. 735

Initiative Measure No. 735 concerns a proposed amendment to the federal constitution. This measure would urge the Washington state congressional delegation to propose a federal constitutional amendment that constitutional rights belong only to individuals, not corporations, and constitutionally-protected free speech excludes the spending of money.

Should this measure be enacted into law?

Yes
 No

Advisory Votes

Advisory Vote No. 14 House Bill 2768

The legislature extended, without a vote of the people, the insurance premium tax to some insurance for stand-alone family dental plans, costing an indeterminate amount in the first ten years, for government spending.

This tax increase should be:

Repealed
 Maintained

Advisory Vote No. 15 Second Engrossed Substitute House Bill 2778

The legislature imposed, without a vote of the people, certain limitations on the retail sales and use tax exemptions for clean alternative-fuel vehicles, costing \$2,000,000 in the first ten years, for government spending.

This tax increase should be:

Repealed
 Maintained

Proposed Amendment to the State Constitution

Senate Joint Resolution No. 8210

The legislature has proposed a constitutional amendment on the deadline for completing state legislative and congressional redistricting. This amendment would require the state redistricting commission to complete redistricting for state legislative and congressional districts by November 15 of each year ending in a one, 46 days earlier than currently required.

Should this constitutional amendment be:

Approved
 Rejected

Local Measures

Mount Vernon Transportation Benefit District

Proposition No. 1 Mount Vernon, Washington Sales and Use Tax for Transportation Improvements

The City Council of Mount Vernon, Washington, adopted Resolution No. 912 concerning a sales and use tax to fund transportation improvements within the Mount Vernon Transportation Benefit District. This proposition would authorize a sales and use tax of two-tenths of one percent (0.2%) of all taxable retail sales within the Mount Vernon Transportation Benefit District, in accordance with RCW 82.14.0455, for a period of ten years. Such revenues would fund the following transportation improvements: street preservation and maintenance, including repaving and repairing streets; and improvement projects further identified in the City's Capital Improvement Plan and/or Transportation Element of the Comprehensive Plan.

Should this proposition be approved?

Yes
 No

Skagit County Fire Protection District No. 14

Proposition No. 1 Property Tax Levy for Fire Protection and Emergency Medical Services

The Board of Skagit County Fire Protection District No. 14 adopted Resolution No. 502 concerning a proposition to maintain and adequately fund District operations.

This proposition authorizes the District to establish its regular property tax levy at \$.75 per \$1,000 of assessed value to be assessed in 2016 and collected in 2017. The funds will finance fire protection operations, replace apparatus and equipment, provide staffing and maintain emergency medical service levels. The maximum allowable levy in 2016 shall serve as the base for subsequent levy limitations as provided by chapter 84.55 RCW.

Should this proposition be:

Approved
 Rejected

Continue Next Page

85652

United States Partisan Office

President/Vice President

Hillary Clinton/Tim Kaine
Democratic Party Nominees

Donald J. Trump/Michael R. Pence
Republican Party Nominees

Alyson Kennedy/Osborne Hart
Socialist Workers Party Nominees

Gloria Estela La Riva/Eugene Puryear
Socialism & Liberation Party Nominees

Jill Stein/Ajamu Baraka
Green Party Nominees

Darrell L. Castle/Scott N. Bradley
Constitution Party Nominees

Gary Johnson/Bill Weld
Libertarian Party Nominees

or write-in:

READ:
Each candidate for President and Vice President is the official nominee of a political party. For other partisan offices, each candidate may state a political party that he or she prefers. A candidate's preference does not imply that the candidate is nominated or endorsed by the party, or that the party approves of or associates with that candidate.

U.S. Senator

Patty Murray
(Prefers Democratic Party)

Chris Vance
(Prefers Republican Party)

or write-in:

Congressional District 1 U.S. Representative

Suzan DelBene
(Prefers Democratic Party)

Robert J. Sutherland
(Prefers Republican Party)

or write-in:

Congressional District 2 U.S. Representative

Rick Larsen
(Prefers Democratic Party)

Marc Hennemann
(Prefers Republican Party)

or write-in:

Washington State Governor

Partisan Office

Jay Inslee
(Prefers Democratic Party)

Bill Bryant
(Prefers Republican Party)

or write-in:

Lt. Governor

Partisan Office

Cyrus Habib
(Prefers Democratic Party)

Marty McClendon
(Prefers Republican Party)

or write-in:

Secretary of State

Partisan Office

Kim Wyman
(Prefers Republican Party)

Tina Podlowski
(Prefers Democratic Party)

or write-in:

State Treasurer

Partisan Office

Duane Davidson
(Prefers Republican Party)

Michael Waite
(Prefers Republican Party)

or write-in:

State Auditor

Partisan Office

Mark Miloscia
(Prefers Republican Party)

Pat (Patrice) McCarthy
(Prefers Democratic Party)

or write-in:

Attorney General

Partisan Office

Bob Ferguson
(Prefers Democratic Party)

Joshua B. Trumbull
(Prefers Libertarian Party)

or write-in:

Commissioner of Public Lands

Partisan Office

Steve McLaughlin
(Prefers Republican Party)

Hilary Franz
(Prefers Democratic Party)

or write-in:

Superintendent of Public Instruction

Nonpartisan Office

Erin Jones

Chris Reykdal

or write-in:

Insurance Commissioner

Partisan Office

Mike Kreidler
(Prefers Democratic Party)

Richard Schrock
(Prefers Republican Party)

or write-in:

Legislative District 10 Partisan Office

State Senator

Barbara Bailey
(Prefers Republican Party)

Angie Homola
(Prefers Democratic Party)

or write-in:

State Representative Pos. 1

Norma Smith
(Prefers Republican Party)

Michael Scott
(Prefers Libertarian Party)

or write-in:

State Representative Pos. 2

Dave Hayes
(Prefers Republican Party)

Doris Brevoort
(Prefers Democratic Party)

or write-in:

Legislative District 39 Partisan Office

State Senator

Kirk Pearson
(Prefers Republican Party)

or write-in:

State Representative Pos. 1

Dan Kristiansen
(Prefers Republican Party)

Linda M. Wright
(Prefers Democrat Party)

or write-in:

State Representative Pos. 2

John Koster
(Prefers Republican Party)

Ronda Metcalf
(Prefers Democratic Party)

or write-in:

Legislative District 40 Partisan Office

State Senator

Kevin Ranker
(Prefers Democratic Party)

Daniel R. Miller
(Prefers Republican Party)

or write-in:

State Representative Pos. 1

Kristine Lytton
(Prefers Democratic Party)

or write-in:

State Representative Pos. 2

Jeff Morris
(Prefers Democratic Party)

or write-in:

Continue Next Page

**Skagit County
Partisan Office**

Commissioner District 1

Ron Wesen
(Prefers GOP Party)

or write-in:

Commissioner District 2

Ken Dahlstedt
(Prefers Democrat Party)

or write-in:

Coroner

2-year unexpired term

Hayley L. Thompson
(Prefers Democratic Party)

or write-in:

**Public Utility District No. 1
Nonpartisan Office**

Commissioner Position 3

Eron Berg

Kevin Loy

or write-in:

**Judicial
Nonpartisan Office**

**Washington State Supreme Court
Justice Position 1**

Mary Yu

David DeWolf

or write-in:

**Washington State Supreme Court
Justice Position 5**

Barbara Madsen

Greg Zempel

or write-in:

**Washington State Supreme Court
Justice Position 6**

Charles (Charlie) Wiggins

Dave Larson

or write-in:

**Skagit County Superior Court
Judge Position 3**

Laura Riquelme

David A. Svaren

or write-in:

**Skagit County District Court
Judge Position 3**

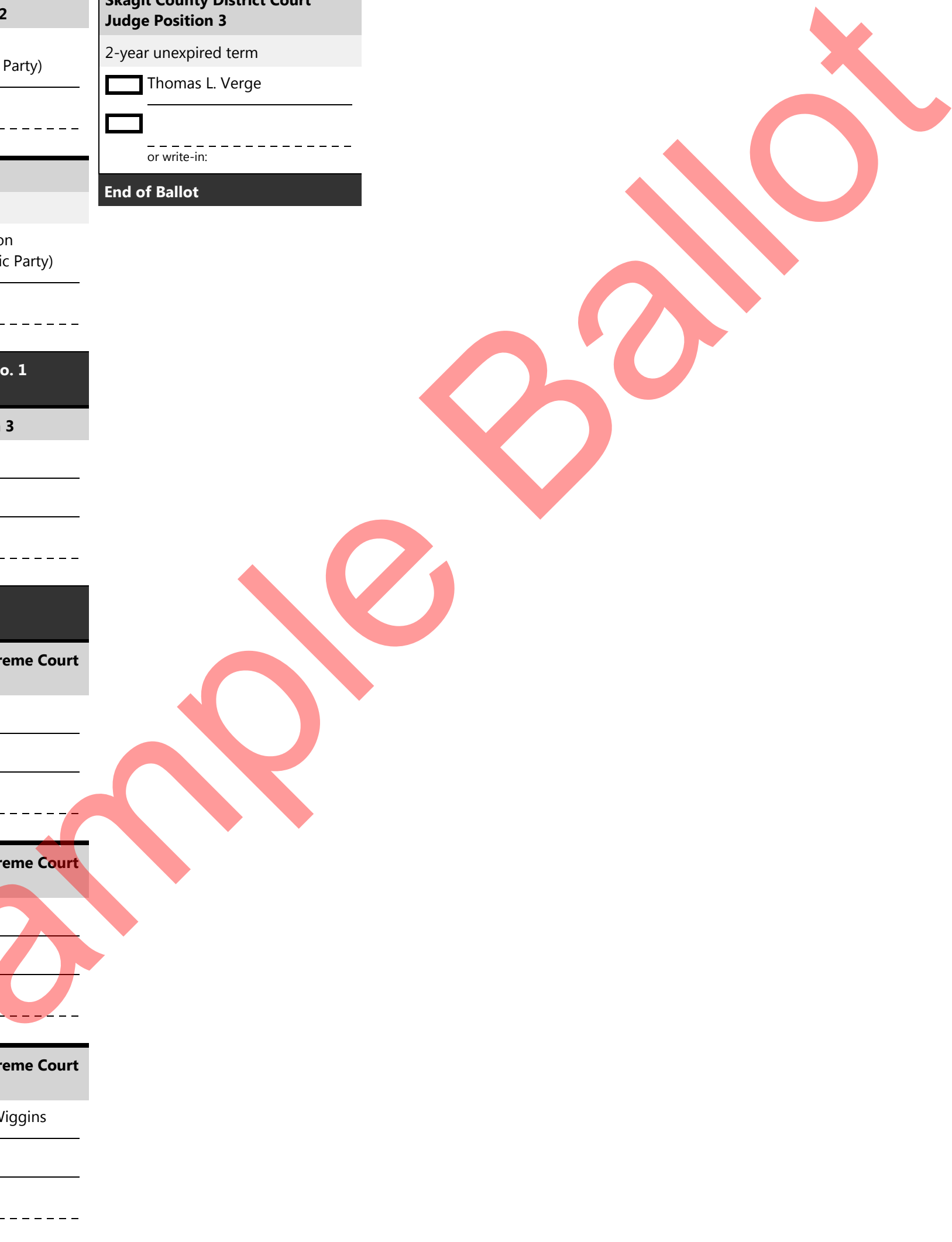
2-year unexpired term

Thomas L. Verge

or write-in:

End of Ballot

85652



Sample Ballot

This page intentionally left blank